

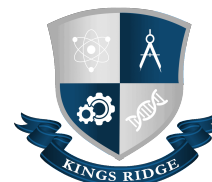
RIVERSIDE ELEMENTARY SCHOOL DISTRICT NO. 2



PATH TO RECOVERY



COVID-19 Mitigation Plan



RIVERSIDE ELEMENTARY SCHOOL DISTRICT NO. 2

PATH TO RECOVERY PLAN

COVID 19 - Mitigation Plan

The Riverside Elementary School District with guidance from the Maricopa Department of Public Health, the Arizona Department of Public Health, the Arizona Department of Education (ADE) and the Center for Disease Control (CDC), has established plans and strategies for the reopening of our schools. This approach is built upon the guidance which are strongly aligned to the recommendations that have been provided by local, state and federal leaders. There is a strong focus on the health and the physical requirements necessary to establish a secure and safe environment where our students can continue their education. This guide was created to outline and prioritize the health and safety of our students and teachers as the district begins to prepare for the 2021-2022 school year and beyond. Updates to this plan will be made as necessary.

Mitigation Plan Goals for RESD

- Minimize the spread of the COVID-19 pandemic.

- Maintain essential school services.

- Maintain continuity of learning for all students.

- Minimize social disruption for families and staff.

Task Force Members for RESD Mitigation Plan

RESD District Leaders:

Dr. Jamie Rivera, Superintendent
Mr. Ruben Gutierrez, Associate Superintendent
Mr. Jose Moreno, Executive Director of Business Services
Ms. Elisabeth Minzer, HR Director
Ms. Brittany Quisberg, HR Specialist
Ms. Dayna Gilmore, SPED Director
Mr. Stacey Hawkins, Technology Director
Ms. Paloma Mungaray, SAIS Coordinator, Technology Secretary, Help Desk
Mr. Andy Valdivia, Maintenance and Transportation Manager

Ms. Eva Chalabi, CNS Manager
Ms. Cindy Sanchez, Riverside Traditional Principal
Ms. Martha Angulo, Riverside Coach
Mr. Marcus Piña, Kings Ridge Preparatory Academy Principal (Retired)
Ms. Jessica Harrington, Kings Ridge Preparatory Academy Principal
Ms. Dawn Vasquez, Kings Ridge Preparatory Academy Asst. Principal
Mr. Rafael Sanchez, Maricopa Institute of Technology Headmaster
Ms. Bonnie Graham, Online Learning Coach
Mr. Ken Turer, Arizona Online Instruction, Director

RESD Nurses:

Ms. Francisca Montiel, Riverside Traditional
Ms. Rosa Corona, Kings Ridge Preparatory Academy

Riverside Traditional Staff:

| | |
|-----------------------|-------------------------|
| Ms. Andrea Han | Ms. Crystal Porras |
| Ms. Christian Avila | Ms. Melissa Soto |
| Ms. Elizabeth Beltran | Ms. Elizabeth Walker |
| Ms. Lorena Muñoz | Ms. Jana Donahue |
| Ms. Andrea Buehrens | Ms. Katlyn Field |
| Ms. Megan Cathey | Mr. Jonathan Gonzalez |
| Ms. Gloria Hernandez | Ms. Wendy Camacho |
| Ms. Nancy Villalobos | Ms. Ivy Holmes |
| Ms. Raquel Barajas | Ms. Shannon McElhany |
| Ms. Amber Brown | Ms. Danielle Lopez-West |
| Ms. Gretchen Rankin | |

Kings Ridge Preparatory Academy Staff:

Ms. Jessica Gober
Ms. Krysta Perez
Ms. Holly Cartwright
Mr. Thomas Howell
Ms. Whitney Reis
Mr. Miguel Echeverria

Maricopa Institute of Technology Staff:

Mr. Vahid Hojreh
Ms. Nidhi Sharma
Ms. Marissa Amaya
Ms. Archana Sunkara
Mr. Yuksel Ak
Ms. Amber Starr
Mr. Chakravarthy Sunkara
Mr. Clemente Rico
Mr. Mehulkumar Gandhi

Riverside Traditional Parents:

Mr. Juan Basaca
Ms. Vanessa Campbell
Mr. Demetrius Holmes
Ms. Shontal McGinty
Ms. Brittany Robinson
Ms. Monique Garcia

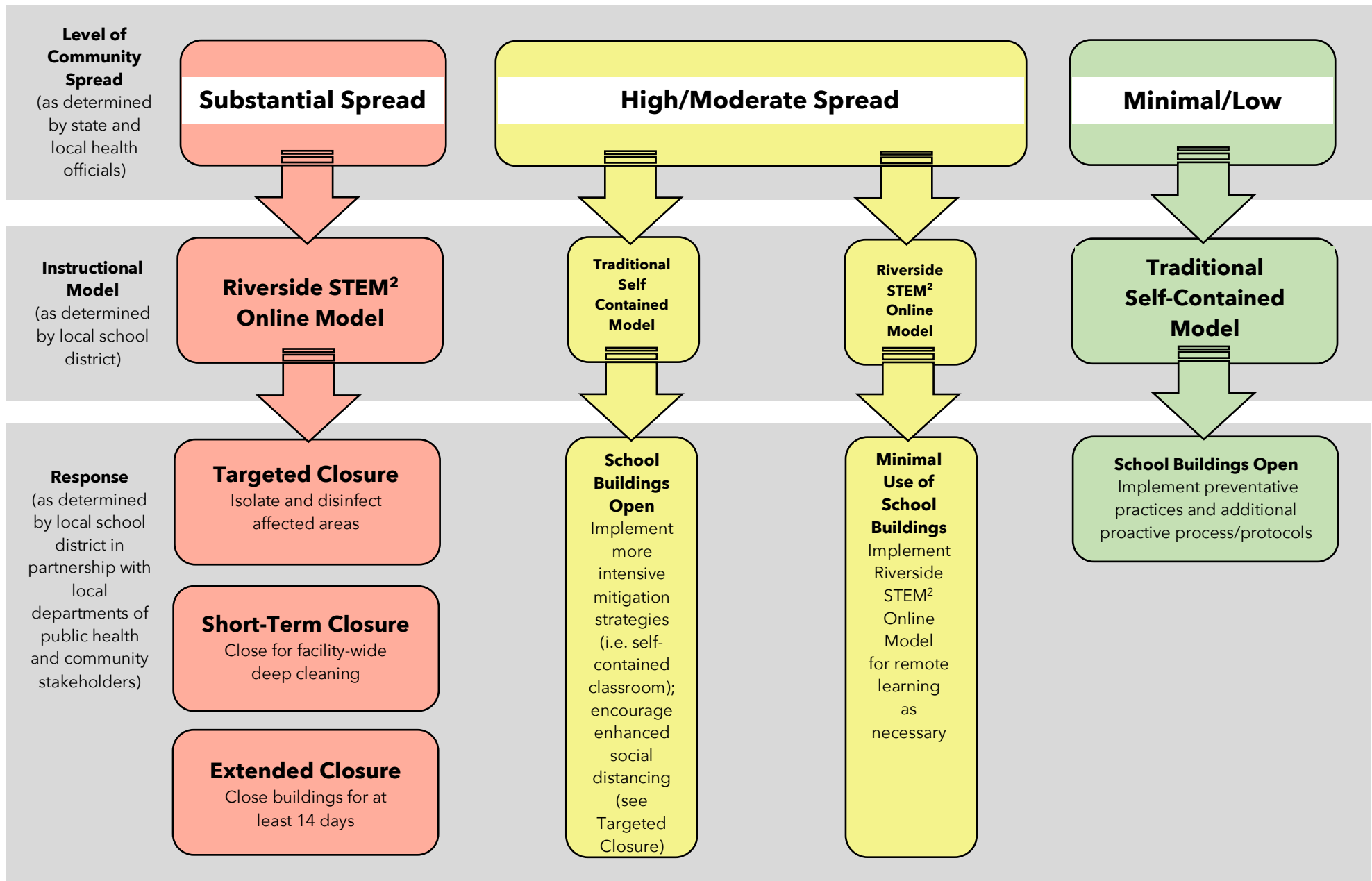
Kings Ridge Preparatory Academy Parents:

Ms. Safio Abdi
Ms. Noel Chilel
Ms. Melisa Ruiz
Ms. Angelica Salas
Ms. Molly Castaneda
Ms. Maryam Abdi

Maricopa Institute of Technology Parents:

| | |
|----------------------|-----------------------|
| Ms. Anna Jordan | Ms. Lynette Guzman |
| Ms. Amanda Lacson | Mr. Nathan Markham |
| Ms. Vanessa Campbell | Ms. Cindy Howard |
| Ms. Socorro Aguilar | Ms. Bernabe Ornelas |
| Ms. Anita Ormsby | Ms. Marisol Hernandez |
| Ms. Gwendolyn Davis | |

RESD Path to Recovery Plan



RESD Path to Recovery Plan

Level of Community Spread
(as determined by state and local
health officials)

Promoting Behaviors that Reduce Spread



Substantial Spread Protocol (School Closure)

Daily Screening

- School buildings are closed.

Physical Distancing

- School buildings are closed.

Staying Home when Appropriate

- School buildings are closed.

Face Coverings

- School buildings are closed.

School Supplies

- School buildings are closed.

Signs and Messages

- School buildings are closed.

Hand Hygiene

- School buildings are closed.

Respiratory Etiquette

- School buildings are closed.

High/Moderate Spread Protocol

Daily Screening

- Staff members will be screened and be provided temperature checks upon arrival to campus.
- Upon arrival at school, each student will go directly to their assigned classroom.
- Teachers will visually screen each student and take their temperature with a non-contact thermometer.

Physical Distancing

- Students will be educated and reminded regularly by staff members to maintain 3-6 feet distance between individuals at all times possible.
- To the greatest extent possible, students will remain with the same groupings and with the same staff throughout the day.
- In the middle grades, students may remain in the classroom and content teachers will rotate to different classrooms in order to deliver instruction and minimize student movement.
- Recess times are staggered to allows for physical distancing.

Minimal/Low Spread Protocol

Daily Screening

- Staff members will be screened and be provided temperature checks upon arrival to campus.
- Upon arrival at school, each student will go directly to their assigned classroom.
- Teachers will visually screen each student and take their temperatures with a non-contact thermometer.

Physical Distancing

- Students will be educated and reminded regularly by staff members to maintain 3-6 feet distance between individuals at all times possible.
- To the greatest extent possible, students will remain with the same groupings and with the same staff throughout the day.
- In the middle grades, students may remain in the classroom and content teachers will rotate to different classrooms in order to deliver instruction and minimize student movement.
- Recess times are staggered to allows for physical distancing.

| | | | |
|--|--|--|---|
| | | <ul style="list-style-type: none"> • Class sizes will be reduced as much as possible within the constraints of the number of students enrolled and the physical layout of the classroom. • All classrooms have plastic dividers on all student desks. <p>Staying Home when Appropriate</p> <ul style="list-style-type: none"> • Students and parents will be educated that students must not come to school if they have any of the following symptoms: • Fever or chills • Shortness of breath or difficulty breathing • Muscle aches • Sore throat • Headache • Fatigue • Congestion or runny nose • Cough • Vomiting • Diarrhea • New loss of taste or smell • Parents will be assured that students will have the opportunity to make up work missed due to symptoms of COVID-19. • Schools will not give out attendance awards for the duration of the COVID-19 health crisis. | <ul style="list-style-type: none"> • Class sizes will be reduced as much as possible within the constraints of the number of students enrolled and the physical layout of the classroom. <p>Staying Home when Appropriate</p> <ul style="list-style-type: none"> • Students and parents will continue to be educated that students must not come to school if they have any of the following symptoms: <ul style="list-style-type: none"> ○ Fever or chills ○ Shortness of breath or difficulty breathing ○ Muscle aches ○ Sore throat ○ Headache ○ Fatigue ○ Congestion or runny nose ○ Cough ○ Vomiting ○ Diarrhea ○ New loss of taste or smell • Parents will be assured that students will have the opportunity to make up work missed due to symptoms of COVID-19. • Schools will not give out attendance awards for the duration of the COVID-19 health crisis. <p>Face Coverings</p> <ul style="list-style-type: none"> • Students and staff will be encouraged to wear a face mask |
|--|--|--|---|

| | | | |
|--|--|--|--|
| | | <p>Face Coverings</p> <ul style="list-style-type: none"> • The Riverside Elementary School District requires masks to be worn at all times before, during (with the exception of breakfast and lunch time) and after school by all staff members, students and visitors to our campuses. Shields in addition to face masks are considered optional. • Only students and staff who require accommodations due to a disability will be considered for opting out. An alternative accommodation will be made. • PPE materials will continue to be available to staff, students and parent upon request. • All students riding a school bus will be <u>required</u> to wear a mask while riding the bus. • Training on the correct usage of face masks has and will continue to be provided to all staff and students. Posters demonstrating the correct usage of face masks are displayed around our campuses as a reminder. <p>School Supplies</p> <ul style="list-style-type: none"> • Each student will have their own student supplies at their table/desk. • School supplies should not be shared among students. Where a school supply or piece of equipment must be shared by | <p>when physical space does not allow for maintenance of 3-6 feet of space between individuals.</p> <ul style="list-style-type: none"> • Students will not be required to wear a face mask during physical activities and when social distancing is maintainable, though they may voluntarily wear face coverings at any time. • PPE materials will continue to be available to staff, students and parent upon request. <p>School Supplies</p> <ul style="list-style-type: none"> • Each student will have their own student supplies at their table/desk. • School supplies should not be shared among students. Where a school supply or piece of equipment must be shared by students (for instance, a pencil sharpener), the item must be wiped down with disinfectant after each use. <p>Signs and Messages</p> <ul style="list-style-type: none"> • Each school will post signs in highly visible locations (i.e., school entrances, restrooms) that promote everyday protective measures and describe how to stop the spread of germs, such as by properly washing hands and properly wearing face mask covering. |
|--|--|--|--|

| | | | |
|--|--|---|--|
| | | <p>students (for instance, a pencil sharpener), the item must be wiped down with disinfectant after each use.</p> <p>Signs and Messages</p> <ul style="list-style-type: none"> Each school will post signs in highly visible locations (i.e., school entrances, restrooms) that promote everyday protective measures and describe how to stop the spread of germs, such as by properly washing hands and properly wearing a cloth face covering. Schools will broadcast regular announcements on reducing the spread of COVID-19 on each school's PA system. All signs will be posted in English and Spanish. <p>Hand Hygiene</p> <ul style="list-style-type: none"> All students will wash their hands with soap and water for at least 20 seconds or will use hand sanitizer with at least 60% alcohol at the following times: <ul style="list-style-type: none"> upon arrival at school (hand sanitizer if there is no sink in the classroom) after being outside for physical activity before and after lunch prior to leaving school for home | <ul style="list-style-type: none"> Schools will broadcast regular announcements on reducing the spread of COVID-19 on each school's PA system. All signs will be posted in English and Spanish. <p>Hand Hygiene</p> <ul style="list-style-type: none"> All students will wash their hands with soap and water for at least 20 seconds or will use hand sanitizer with at least 60% alcohol at the following times: <ul style="list-style-type: none"> upon arrival at school (hand sanitizer if there is no sink in the classroom) after being outside for physical activity before and after lunch prior to leaving school for home after sneezing, coughing, or blowing nose Posters will be displayed around the campuses reminding students of proper handwashing techniques. <p>Respiratory Etiquette</p> <ul style="list-style-type: none"> Staff and students will continue to cover coughs and sneezes with a tissue. Used tissues will be thrown in the trash and hands washed immediately with soap and water for at least 20 seconds. |
|--|--|---|--|

| | | | |
|--|--|---|--|
| | | <ul style="list-style-type: none"> ○ after sneezing, coughing, or blowing nose • Posters will be displayed around the campuses reminding students of proper handwashing techniques. <p>Respiratory Etiquette</p> <ul style="list-style-type: none"> • Staff and students will be provided proper training in covering coughs and sneezes with a tissue. • Used tissues will be thrown in the trash and hands washed immediately with soap and water for at least 20 seconds. • If soap and water are not readily available, hand sanitizer that contains at least 60% alcohol can be used. • Posters will be displayed around the campuses reminding students of proper respiratory etiquette. <p>Accommodations for SPED Students</p> <ul style="list-style-type: none"> • The Riverside Elementary School District's Department of Exceptional Student Services works with all district staff to ensure appropriate accommodations for students with disabilities are provided in accordance with state and local recommendations. | <ul style="list-style-type: none"> • If soap and water are not readily available, hand sanitizer that contains at least 60% alcohol can be used. • Posters will be displayed around the campuses reminding students of proper respiratory etiquette. <p>Accommodations for SPED Students</p> <ul style="list-style-type: none"> • The Riverside Elementary School District's Department of Exceptional Student Services works with all district staff to ensure appropriate accommodations for students with disabilities are provided in accordance with state and local recommendations. • The Riverside Elementary School District's Department of Exceptional Student Services encourages the continued use of facemasks and/or face shields for students with disabilities. • Related services are encouraged to provide push-in services and cohorts to maximize minimal contact between students. |
|--|--|---|--|

| | | | |
|--|--|---|--|
| | | <ul style="list-style-type: none">• The Riverside Elementary School District's Department of Exceptional Student Services encourages the continued use of facemasks and/or face shields for students with disabilities.• Related services are encouraged to provide push-In services and cohorts to maximize minimal contact between students. | |
|--|--|---|--|

RES D Path to Recovery Plan

Level of Community Spread
(as determined by state and local
health officials)

Maintaining Healthy Environments



Substantial Spread Protocol (School Closure)

Cleaning and Disinfection

- Only areas occupied will be cleaned and disinfected.

Shared Objects

- School buildings are closed.

Ventilation

- HVAC filters will be closely monitored and changed during school closure.

Water Systems

- All water fountains will be closed.

Classroom Arrangements

- School buildings are closed.

Communal Spaces

- School buildings are closed.

Bathrooms

- School buildings are closed.

Front Office

- Floor decals will be placed on the floor 6 feet from the front office desk and signage will

High/Moderate Spread Protocol

Cleaning and Disinfecting

- Custodial staff will be assigned schedules for increased cleaning of high touch surfaces and bathrooms throughout the day by using EPA approved disinfectants.
- All frequently touched surfaces, such as door handles, sinks and desks will be cleaned and disinfected daily.
- Students classrooms will be disinfected by afternoon custodians and all other common areas will be disinfected by maintenance personnel throughout the regular work day schedule.
- Bus seats and windows will be disinfected after each use (e.g., after the morning routes and after the afternoon routes).
- Every Wednesdays and occasional Saturdays will be utilized to deep clean and disinfect all school campuses.
- The highest standard of work performance will be required for the safety of all students and staff members.

Minimal/Low Spread Protocol

Cleaning and Disinfection

- Students classrooms will be disinfected by afternoon custodians and all other common areas will be disinfected by maintenance personnel throughout the regular work day schedule.
- All operations will be intensified to better address all aspects of cleaning and disinfecting. A strong emphasis will be placed minimizing contamination.
- Bus seats and windows will be disinfected after each use (e.g., after the morning routes and after the afternoon routes).
- The highest standard of work performance will be required for the safety of all students and staff members.
- Electrostatic sprayers are used on all school busses and classrooms.
- Sports equipment and any other shared items (if they are being used) will be cleaned between uses by teachers and/or custodial staff utilizing district-

| | | | |
|--|---|--|--|
| | <p>direct visitors not to come closer than the floor decals allow.</p> <ul style="list-style-type: none"> • A glass/plexiglass divider is placed in front of each front office desk. | <ul style="list-style-type: none"> • Electrostatic sprayers are used on all school busses and classrooms. • Sports equipment and any other shared items (if they are being used) will be cleaned between uses by teachers and/or custodial staff utilizing district-provided approved cleaning products. <p>Shared Objects</p> <ul style="list-style-type: none"> • Prohibit the sharing of objects that would be difficult to clean or disinfect. <p>Ventilation</p> <ul style="list-style-type: none"> • Protocols are established based on CDC and ADE Guidelines along with any federal, state or local orders. • HVAC filters will be monitored monthly and changed as scheduled. • The EMS HVAC system has been programed to open to maximum capacity for the maximum fresh air intake. <p>Water Systems</p> <ul style="list-style-type: none"> • Prohibit use of water fountains. Installed new bottle friendly water faucets in each classroom and new water fountain filling stations in key areas. | <p>provided approved cleaning products.</p> <p>Shared Objects</p> <ul style="list-style-type: none"> • Discourage the sharing of objects that would be difficult to clean or disinfect. <p>Ventilation</p> <ul style="list-style-type: none"> • Normal HVAC Operations <p>Water Systems</p> <ul style="list-style-type: none"> • Prohibit use of water fountains. Install new bottle friendly water faucets in each classroom and new water fountain filling stations in key areas. <p>Classroom Arrangements</p> <ul style="list-style-type: none"> • All classrooms will be arranged to best distance students and teachers. <p>Communal Spaces</p> <ul style="list-style-type: none"> • No more than one class at a time may be on playground equipment. • Students can play outside for physical movement with social distancing will be encouraged at all times during outside play. • Teachers will be encouraged to be creative in employing techniques to maintain social distancing during unstructured time. |
|--|---|--|--|

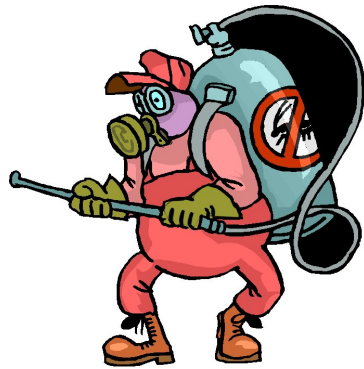
| | | | |
|--|--|--|---|
| | | <p>Classroom Arrangements</p> <ul style="list-style-type: none"> • All desks will face the same direction rather than facing each other. • Large tables for groups of students will not be used unless they are the only option, in which case a table divider will be utilized. • Students will not be physically grouped to work together, however, teachers are encouraged to use technology to facilitate group work and group learning where appropriate for the age, subject and capabilities of the students. • Students will be given water bottles to minimize touching of water fountains. <p>Communal Spaces</p> <ul style="list-style-type: none"> • Individual classes are assigned a specific time slot and location to take their students outside for recess with social distancing maintained at all times. • Students may not use playground equipment. • Separate classrooms may not mingle during outside activity time. <p>Bathrooms</p> <ul style="list-style-type: none"> • Students will enter bathrooms in groups no larger than the | <p>Bathrooms</p> <ul style="list-style-type: none"> • Bathrooms will be cleaned regularly throughout the day. • Students will be directed to maintain social distancing in bathrooms. • Posters reminding students of proper handwashing techniques will be placed in all bathrooms. <p>Front Office</p> <ul style="list-style-type: none"> • Social distancing markers are placed on the floor 6 feet from the front office desk and signage will direct visitors not to come closer than the tape markings. • A glass/plexiglass divider is now located in every front office in the district. |
|--|--|--|---|

| | | | |
|--|--|---|--|
| | | <p>number of stalls/urinals in the bathroom.</p> <ul style="list-style-type: none">• Students will be directed to maintain social distancing in bathrooms and wear their face mask at all times while in the bathroom.• Posters reminding students of proper handwashing techniques are placed in all bathrooms. <p>Front Office</p> <ul style="list-style-type: none">• Social distancing markers are placed on the floor 6 feet from the front office desk and signage will direct visitors not to come closer than the tape markings.• A glass/plexiglass divider is now located in every front office in the district.• All visitors are required to have their temperature checked upon arrival. | |
|--|--|---|--|

RESD Path to Recovery Plan

Level of Community Spread
(as determined by state and local
health officials)

Maintaining Healthy Operations



Substantial Spread Protocol (School Closure)

Assemblies, Visitors, Field Trips

- School buildings are closed.

Identifying Small Groups and Keeping Them Together

- School buildings are closed.

Designated COVID-19 Point of Contact

- The school nurse will be the designated COVID-19 point of contact with the principal as their back-up.

Communication Systems

- A communication system utilizing emails, text messages, phone calls, social media and robocalls will be implemented when contacting the following groups:
 - Parents/Guardians
 - Students
 - Employees

Back-up Staffing Plan

- School buildings are closed.

High/Moderate Spread Protocol

Assemblies, Visitors, Field Trips

- School-wide assemblies will be held virtually with student groups remaining in their classrooms.
- No visitors and/or volunteers will be allowed without principal approval.
- Parent volunteers will not be utilized in the classroom during the COVID-19 health crisis.
- Field trips will be canceled.
- Teachers will use virtual learning opportunities (such as virtual tours of museums) to enhance students' educational experiences.

Identifying Small Groups and Keeping Them Together

- Student groupings will be as static as possible by having the same group of children stay together and with the same staff (all day for young children, and as much as possible for older children).
- Schools will limit mixing between groups, whenever possible.

Minimal/Low Spread Protocol

Assemblies, Visitors, Field Trips

- School-wide assemblies may be held with student groups maintaining appropriate social distancing.
- Nonessential visitors and volunteers may continue to be prohibited.
- If parent volunteers and visitors are allowed, they will be limited in number and must agree to adhere to the District's social distancing and other protocols.
- Field trips will be permitted ONLY if the area to be visited is at a Step Three of community mitigation.

Identifying Small Groups and Keeping Them Together

- Student groupings will be as static as possible by having the same group of children stay together and with the same staff (all day for young children, and as much as possible for older children).
- Schools will limit mixing between groups, whenever possible.

| | | | |
|--|--|--|--|
| | <p>Staff Training</p> <ul style="list-style-type: none"> In accordance with CDC guidelines, all staff will be provided safety protocol and procedures training at the beginning of the school year and throughout the school year. <p>Isolate Those Who are Sick</p> <ul style="list-style-type: none"> School buildings are closed. | <p>Designated COVID-19 Point of Contact</p> <ul style="list-style-type: none"> The school nurse will be the designated COVID-19 point of contact with the principal as their back-up. <p>Communication Systems</p> <ul style="list-style-type: none"> A communication system utilizing emails, text messages, phone calls, social media and robocalls will be implemented when contacting the following groups: <ul style="list-style-type: none"> Parents/Guardians Students Employees <p>Back-up Staffing Plan</p> <ul style="list-style-type: none"> Each school will be assigned one permanent substitute to support any absent staff member. <p>Staff Training</p> <ul style="list-style-type: none"> In accordance with CDC guidelines, all staff will be provided safety protocol and procedures training at the beginning of the school year and throughout the school year. <p>Isolate Those Who are Sick</p> <ul style="list-style-type: none"> Students should not come to school if they are sick and their parents should notify school officials (the designated COVID-19 point of contact) if their child | <p>Designated COVID-19 Point of Contact</p> <ul style="list-style-type: none"> The school nurse will be the designated COVID-19 point of contact with the principal as their back-up. <p>Communication Systems</p> <ul style="list-style-type: none"> A communication system utilizing emails, text messages, phone calls, social media and robocalls will be implemented when contacting the following groups: <ul style="list-style-type: none"> Parents/Guardians Students Employees <p>Back-up Staffing Plan</p> <ul style="list-style-type: none"> Each school will develop a substitute plan utilizing internal coverage. District substitutes and a substitute vendor can be utilized to cover teacher absences. <p>Staff Training</p> <ul style="list-style-type: none"> In accordance with CDC guidelines, all staff will be provided safety protocol and procedures training at the beginning of the school year and throughout the school year. <p>Isolate Those Who are Sick</p> <ul style="list-style-type: none"> Students should not come to school if they are sick and their |
|--|--|--|--|

| | | | |
|--|--|---|---|
| | | <p>becomes sick with COVID-19 symptoms, test positive for COVID-19, or has been exposed to someone with COVID-19 symptoms or a confirmed or suspected case.</p> <ul style="list-style-type: none"> • Students with COVID-19 symptoms (such as fever, cough, or shortness of breath) will be immediately placed in an isolated room or area while at school waiting to be picked up. • Students who are sick will be sent home or to a healthcare facility depending on how severe their symptoms are. • Any student with visible symptoms of runny nose, cough, shortness of breath, or vomiting, or one who has a fever above 100.4 degrees will be taken to the health office. • Parents may be contacted for pick-up with the following EXCEPTIONS: <ul style="list-style-type: none"> ○ If the student has a runny nose and the nurse/health aide observes that there are no other symptoms, the nurse/health aide will contact parent to inquire as to whether the student has had any other symptoms or there have been any COVID-19 exposures in the home and if not, student may return to class. | <p>parents should notify school officials (the designated COVID-19 point of contact) if their child becomes sick with COVID-19 symptoms, test positive for COVID-19, or has been exposed to someone with COVID-19 symptoms or a confirmed or suspected case.</p> <ul style="list-style-type: none"> • Students with COVID-19 symptoms (such as fever, cough, or shortness of breath) will be immediately placed in an isolated room or area while at school waiting to be picked up. • Students who are sick will be sent home or to a healthcare facility depending on how severe their symptoms are. • Any student with visible symptoms of runny nose, cough, shortness of breath, or vomiting, or one who has a fever above 100.4 degrees will be taken to the health office. • Parents may be contacted for pick up with the following EXCEPTIONS: <ul style="list-style-type: none"> ○ If the student has a runny nose and the nurse/health aide observes that there are no other symptoms, the nurse/health aide will contact parent to inquire as to whether the student has had any other symptoms or there have been any COVID- |
|--|--|---|---|

| | | | |
|--|--|---|---|
| | | <ul style="list-style-type: none"> ○ If the student has health information on file that confirms a diagnosis of asthma or other respiratory condition and the nurse/health aide observes that there are no other symptoms, the nurse/health aide will contact parent to inquire as to whether the student has had any other symptoms or there have been any COVID-19 exposures in the home and if not, student may return to class. <p>Covid-19 Coordination with State and Local Health Agencies and Officials</p> <ul style="list-style-type: none"> • The District Director of Human Resources along with the district nurses attend weekly Covid-19 webinars provided by the Maricopa County Department of Public Health to keep informed of the most recent guidance on Covid-19 for schools. • District nurses are in constant contact with CDC and the Arizona Department of Health Services to monitor the spread of Covid-19 within our school community. • A bi-monthly Health Advisory Committee comprised of the Superintendent, Associate | <p>19 exposures in the home and if not, student may return to class.</p> <ul style="list-style-type: none"> ○ If the student has health information on file that confirms a diagnosis of asthma or other respiratory condition and the nurse/health aide observes that there are no other symptoms, the nurse/health aide will contact parent to inquire as to whether the student has had any other symptoms or there have been any COVID-19 exposures in the home and if not, student may return to class. <p>Covid-19 Coordination with State and Local Health Agencies and Officials</p> <ul style="list-style-type: none"> • The District Director of Human Resources along with the district nurses attend weekly Covid-19 webinars provided by the Maricopa County Department of Public Health to keep informed of the most recent guidance on Covid-19 for schools. • District nurses are in constant contact with CDC and the Arizona Department of Health Services to monitor the spread of Covid-19 within our school community. |
|--|--|---|---|

| | | | |
|--|--|---|---|
| | | Superintendent, district nurses, all school principals and the HR department meets to be updated on Covid-19 spread in our and surrounding communities and to review and make revisions on our mitigation plan as needed. | <ul style="list-style-type: none">• A bi-monthly Health Advisory Committee comprised of the Superintendent, Associate Superintendent, district nurses, all school principals and the HR department meets to be updated on Covid-19 spread in our and surrounding communities and to review and make revisions on our mitigation plan as needed. |
|--|--|---|---|

RES D Path to Recovery Plan

Level of Community Spread
(as determined by state and local
health officials)

Transporting Students



Substantial Spread Protocol (School Closure)

District/School Considerations

- District vehicles will be used to deliver meals to students and families during school closure.
- Designate area where meals will be delivered will be located within district boundaries.
- Dates, times and personal responsible for the transporting of meals will be established.
- Non-Negotiable: All personal must wear proper PPE and practice social distancing during vehicle transportation and during the distribution of meals.

Bus Driver/Aide

- School buildings are closed.

Student Bus Stop

- School buildings are closed.

Signage

- School buildings are closed.

Seating

- School buildings are closed.

High/Moderate Spread Protocol

District/School Considerations

- Hand sanitizer for students and bus drivers will be provided.
- Bus drivers will be required to wear a face mask when on a school bus.
- Students and bus drivers will be visually screened for symptoms of illness and utilize spaced seating (to the extent practicable).
- Clean and disinfect frequently touched surfaces on the bus at least daily.
- Protocols for loading/unloading students at a bus stops will be established to minimize congregation of students from different households.

Bus Driver/Aide

- Will be required to wear proper PPE (face mask, shields, gloves etc.) and to disinfect the bus before routes and between and after bus routes.

Minimal/Low Spread Protocol

District/School Considerations

- Implement standard operating procedures while taking preventative measures such as:
 - providing hand sanitizer for students and bus drivers
 - having bus drivers and students wear a face mask
 - inspecting buses prior to students returning and as part of a regular rotation
 - cleaning and disinfecting frequently touched surfaces on the bus at least daily
 - airing out buses when not in use

Bus Driver/Aide

- Will be encouraged to wear proper PPE (face mask, shields, gloves etc.) and to disinfect the bus before routes and between and after bus routes.

Student Bus Stop

- Parents and students will be encouraged to practice social distancing at each bus stop.

| | | | |
|--|--|--|---|
| | | <p>Student Bus Stop</p> <ul style="list-style-type: none"> • Parents will be encouraged to have students wait in vehicles until bus arrival. • Students will practice 3-6 feet social distancing and wear a face mask. • Students will also be required to wear a face mask on the bus and leave them on during entire transportation. • Bus drivers will screen students. If students exhibit visible symptoms, driver will inform parents "if available" and return them to their parents. • If parents are unavailable the bus driver will communicate with the school site and student will be taken directly to school site nurse. <p>Signage</p> <ul style="list-style-type: none"> • All buses will have clearly visible signage communicating to parents that students should not enter the school bus with any of the following symptoms: <ul style="list-style-type: none"> ○ Shortness of breath or difficulty breathing ○ Muscle aches ○ Sore throat ○ Headache ○ Fatigue ○ Congestion or runny nose ○ Cough | <ul style="list-style-type: none"> • Students will practice 3-6 feet social distancing and wear a face mask. • Students will be encouraged to wear a face mask on the bus and leave them on during entire transportation. • Bus drivers will screen students. If students exhibit visible symptoms, driver will inform parents "if available" and return them to their parents. • If parents are unavailable the bus driver will communicate with the school site and student will be taken directly to school site nurse. <p>Signage</p> <ul style="list-style-type: none"> • All buses will have clearly visible signage communicating to parents that students should not enter the school bus with any of the following symptoms: <ul style="list-style-type: none"> ○ Shortness of breath or difficulty breathing ○ Muscle aches ○ Sore throat ○ Headache ○ Fatigue ○ Congestion or runny nose ○ Cough ○ Vomiting ○ Diarrhea ○ New loss of taste or smell |
|--|--|--|---|

| | | | |
|--|--|---|---|
| | | <ul style="list-style-type: none"> ○ Vomiting ○ Diarrhea ○ New loss of taste or smell <p>School Bus Seating</p> <ul style="list-style-type: none"> • All students are required to wear face coverings when riding in a school bus. • To the greatest extent possible given bus capacity, students will be assigned seats on buses with one student per row and, when possible, there will be an empty row between students. • Where students can be assigned one per row, students will be assigned to sit in the seat closest to the window. • School buses will maintain maximum ventilation at all times including open windows, when possible due to weather, and ventilation systems will be set on non-recirculating mode. • | <p>School Bus Seating</p> <ul style="list-style-type: none"> • Given bus capacity, students will be encouraged to continue to wear a face mask. • School buses will maintain maximum ventilation at all times including open windows, when possible due to weather, and ventilation systems will be set on non-recirculating mode. |
|--|--|---|---|

RES D Path to Recovery Plan

Level of Community Spread
(as determined by state and local
health officials)

Entering/Leaving School Buildings



Substantial Spread Protocol (School Closure)

Drop-Off/Pick-Up Procedures

- School buildings are closed.

Post Signage

- School buildings are closed.

High/Moderate Spread Protocol

Drop-Off/Pick-Up Procedures

- Designated parent drop-off and pick-up areas will be assigned and communicated.

Post Signage

- Each school will post signs in highly visible locations (i.e., school entrances, restrooms) that promote everyday protective measures and describe how to stop the spread of germs, such as by properly washing hands and properly wearing a cloth face covering.
- All signs will be posted in English and Spanish.
- Dedicated entrance and exit doors will be assigned.

Minimal/Low Spread Protocol

Drop-Off/Pick-Up Procedures

- Designated parent drop-off and pick-up areas will be assigned and communicated.

Post Signage

- Each school will post signs in highly visible locations (i.e., school entrances, restrooms) that promote everyday protective measures and describe how to stop the spread of germs, such as by properly washing hands and properly wearing a cloth face covering.
- All signs will be posted in English and Spanish.
- Dedicated entrance and exit doors will be assigned.

RESD Path to Recovery Plan

Level of Community Spread
(as determined by state and local
health officials)

Serving Meals



Substantial Spread Protocol (School Closure)

Serving Model for School Closure

- School buildings are closed.
- Serving team will practice established social distancing protocols to the greatest extent practicable.
- Provide Protective Personal Equipment (PPE) to participating kitchen staff.
- Reduce congregation and contact by allowing parents to pick-up meals from the following school sites:
 - Riverside Traditional School
 - Kings Ridge Preparatory School
 - MIT-Maricopa Institute of Technology
- Delivering pre-packaged meals to bus routes for parents to pick up.

***Subject to USDA meal waiver approval**

High/Moderate Spread Protocol

Traditional Self-Contained Model

- Students will wash hands or utilize sanitizer before and after meal service.
- A pre-packaged breakfast is delivered to all classrooms.
- Pre-packed lunches are provided to each student and consumed in the Multipurpose Room. Students have lunch by grade-level and are separated by 6 feet while eating at Riverside Traditional School.
- Pre-packed lunches are provided to each student and consumed in the classroom for Kings Ridge students.
- Students are prevented from sharing food and utensils.
- Staff and teachers are wearing gloves when handling meals and when assisting students with opening individually bagged food items.
- Kitchen staff will conduct cleaning of cafeterias and high-touch surfaces throughout the lunch period when the cafeteria is utilized.

Minimal/Low Spread Protocol

Cafeteria Serving Model

- Implement standard operating procedures while taking preventative measures such as:
- Wash hands or utilize sanitizer before and after meal service for students and staff.
- Allowing students and staff to wear face coverings while in large group gatherings.
- Students will receive a pre-plated meal.
- Students will maintain distance while waiting in line to pick-up meal.
- Students will be prevented from sharing food and utensils.
- Kitchen staff will conduct cleaning of cafeterias and high-touch surfaces throughout the lunch period.
- Assigned seating will be based on AZ Health Department recommendations and CDC guidelines.

Riverside STEM² Online Model

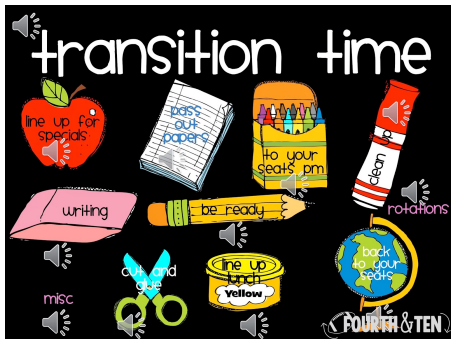
- Online students are not eligible to receive NSLP meals.

| | | | |
|--|--|--|--|
| | | Riverside STEM² Online Model <ul style="list-style-type: none">• Online students are not eligible to receive NSLP meals. | |
|--|--|--|--|

RES D Path to Recovery Plan

Level of Community Spread
(as determined by state and local
health officials)

Movement on Campus



Substantial Spread Protocol (School Closure)

Hallways/Walkways

- School buildings are closed.

Going to Lunch

- School buildings are closed.

Going to Recess

- School buildings are closed.

Arriving at School

- School buildings are closed.

Leaving the Campus

- School buildings are closed.

High/Moderate Spread Protocol

Hallways/Walkways

- Hallways/walkways will be marked to direct students to stay on one side of the hallway/walkway for each direction of travel, as feasible.
- Where possible given the school layout, certain hallways/walkways may be designated one-way hallways/walkways.
- Student transitions will be as minimal as possible.

Going to Lunch

- Students in PreK will be eating their lunch in their classrooms.
- Students in Kindergarten to 4th grade will eat their lunch in the cafeteria by grade-level and will be 6 feet apart in distance facing in one direction.
- Students in grades 5th - 8th will be eating in their classrooms.

Going to Recess

- Scheduled recess times will be staggered for individual classes to limit contact with other students.

Minimal/Low Spread Protocol

Hallways/Walkways

- Hallways/walkways will be marked to direct students to stay on one side of the hallway/walkway for each direction of travel, as feasible.
- Where possible given the school layout, certain hallways/walkways may be designated one-way hallways/walkways.

Going to Lunch

- Staggered schedules will be established for lunch.

Going to Recess

- Scheduled recess times will be staggered for individual classes to limit contact with other students.

Arriving at School

- Upon arriving at school, students will proceed directly to their classrooms.

Leaving the Campus

- Students will be dismissed using a staggered schedule.

| | | | |
|--|--|---|--|
| | | <p>Arriving at School</p> <ul style="list-style-type: none">• Upon arriving at school, students will proceed directly to their classrooms. <p>Leaving the Campus</p> <ul style="list-style-type: none">• Students will be dismissed using a staggered schedule. | |
|--|--|---|--|

RES D Path to Recovery Plan

Level of Community Spread
(as determined by state and local
health officials)

Technology Plan



Substantial Spread Protocol (School Closure)

Computing Devices (Desktops, Laptops, Tablets) and Connectivity

- Online courses will be supported by the District's Technology Department.
- District's Technology Department will support video conferencing platforms.
- Each school will provide a device check-out process.
- Opportunities will be provided via an application system for home internet access based on student needs.

Mobile Device Management and Communication Platforms

- The district will provide online students with technology support.
- Each student will get an email account that will be maintained by the Technology Department.

Staff, Student & Family Tech Support

- Tech support will be provided remotely to enforce social

High/Moderate Spread Protocol

Computing Devices (Desktops, Laptops, Tablets) and Connectivity

- District internet access and wireless is available at all school sites.
- Computer devices will be available to all students for school and home use as needed.
- Opportunities will be provided via an application system for home internet access based on student needs.

Mobile Device Management and Communication Platforms

- The district will provide support for school sites and online.
- Each student will get an email account that will be maintained by the Technology Department.

Staff, Student & Family Tech Support

- Tech support will be provided remotely and in-person as needed.
- Tech staff will utilize PPE while performing support in-person.

Minimal/Low Spread Protocol

Computing Devices (Desktops, Laptops, Tablets) and Connectivity

- District internet access and wireless is available at all school sites.
- Computer devices will be available to all students for school and home use.
- Opportunities will be provided via an application system for home internet access based on student needs.

Mobile Device Management and Communication Platforms

- The district will provide support for school sites and online.
- Each student will get an email account that will be maintained by the Technology Department.

Staff, Student & Family Tech Support

- In-person support will be available while taking preventative measures during support visits.
- Tech support will be provided remotely after school hours.

| | | | |
|--|--|--|--|
| | <p>distancing during and after school hours.</p> <ul style="list-style-type: none"> • Device drop off will still be available for tech support. • Tech support in person can be scheduled in advanced using PPE. <p>Privacy and Security Considerations</p> <ul style="list-style-type: none"> • RESD students will only use district-issued devices for school purposes to ensure secure internet usage. <p>Computer Labs/STEM² Labs</p> <ul style="list-style-type: none"> • Not available for student usage. | <ul style="list-style-type: none"> • Daily contact with staff will be minimized. • Tech support will be provided remotely after school hours as needed. <p>Privacy and Security Considerations</p> <ul style="list-style-type: none"> • RESD students will only use district-issued devices for school purposes to ensure secure internet usage. <p>Computer Labs/STEM² Labs</p> <ul style="list-style-type: none"> • Computer and STEM² labs will be utilized and disinfected by the teacher between usage. | <p>Privacy and Security Considerations</p> <ul style="list-style-type: none"> • RESD students will only use district-issued devices for school purposes to ensure secure internet usage. <p>Computer Labs/STEM² Labs</p> <ul style="list-style-type: none"> • All labs will be available for use. • Labs will be disinfected after each use. |
|--|--|--|--|

RES D Path to Recovery Plan

Level of Community Spread
(as determined by state and local
health officials)

Supporting Teaching and Learning



Substantial Spread Protocol (School Closure)

District/School Considerations

- Survey families to gauge which model is most accessible to continue a student's education.

Riverside STEM² Online Model

- All instruction will be through Riverside STEM² AOI learning, with no in-person instruction.
- Special education services will be provided based on individual needs through virtual support.
- Support staff will be assigned to students for additional help.
- Professional Development will take place virtually for teachers.

Social/Emotional Learning

- Support will be provided for students if available.

Teacher Professional Development

- Will continue to take place on Wednesdays for staff.

High/Moderate Spread Protocol

District/School Considerations

- Provide families with information regarding which of our two instructional models is most accessible to continue their student's education.

Parents will be provided with 2 options for learning opportunities:

1) Traditional Model

- Monday, Tuesday, Thursday and Friday are in-person instructional days.
- Almost every Wednesday is an in-person half day instructional day. Some Wednesdays are full instructional days.
- Students will remain with the same teacher and same peers throughout the school day at Riverside Traditional School.
- Teachers at Kings Ridge Preparatory Academy will transition from classroom to classroom. Students will remain with the same peers throughout the school day.
- Special area teachers will provide instruction per CDC/ADE guidelines.

Minimal/Low Spread Protocol

District/School Considerations

- Provide families with information regarding which of our two instructional models is most accessible to continue their student's education.

Parents will be provided with 2 options for learning opportunities:

1) Traditional Model

- Monday, Tuesday, Thursday and Friday in school building.
- Almost every Wednesday is an in-person half day instructional day. Some Wednesdays are full instructional days.
- Students will remain with the same teacher and same peers throughout the school day at Riverside Traditional School.
- Students at Kings Ridge Preparatory Academy will transition from classroom to classroom. Students will remain with the same peers throughout the school day.
- Special area teachers will provide instruction per CDC/ADE guidelines.

| | | | |
|--|--|---|---|
| | | <p>2) Riverside STEM² AOI Model</p> <ul style="list-style-type: none"> • AOI instruction meets per set schedule on Mondays thru Thursdays. • All instruction (reading, math, writing, science, social studies) will be through online learning. • Special education services will be provided based on individual needs through virtual support. • The number of teachers participating in online instruction will be based on the number of students enrolled. <p>Social, Emotional and Mental Health Needs for Students</p> <ul style="list-style-type: none"> • Connections and access to outside agency to support social emotional needs of students and families is provided. • Several community resources are available in our front offices to our school community. • A social worker is available for students and families throughout the school year. • Students are provided with "pop-up" clubs and after school sports to provide additional opportunities for social emotional growth as well as stress relief strategies. • Our Student Behavior Support Program (SSBSP) will continue to intensely work to identify and provide services to students | <p>2) Riverside STEM² AOI Model</p> <ul style="list-style-type: none"> • AOI instruction meets per set schedule on Mondays thru Thursdays. • All instruction (reading, math, writing, science, social studies) will be through online learning. • Special education services will be provided based on individual needs through virtual support. • The number of teachers participating in online instruction will be based on the number of students enrolled. <p>Social, Emotional and Mental Health Needs for Students</p> <ul style="list-style-type: none"> • Connections and access to outside agency to support social emotional needs of students and families is provided. • Several community resources are available in our front offices to our school community. • A social worker is available for students and families throughout the school year. • Students are provided with "pop-up" clubs and after school sports to provide additional opportunities for social emotional growth as well as stress relief strategies. • Our Student Behavior Support Program (SSBSP) will continue to intensely work to identify and provide services to students |
|--|--|---|---|

| | | | |
|--|--|--|---|
| | | <p>demonstrating additional needs throughout the school year.</p> <p>Social, Emotional and Mental Health Needs for Employees</p> <ul style="list-style-type: none"> • Riverside Elementary School District provides an Employee Assistance Plan (EAP) at no cost for Riverside employees. This service provides a confidential assessment, 6 counseling sessions and referral services to employees for behavioral health issues and additional support if needed. • An electronic Health and Wellness newsletters is provided monthly to our employees by each school's Wellness Coordinator. <p>Teacher Professional Development</p> <ul style="list-style-type: none"> • Will continue to take place on half day Wednesdays for all staff. | <p>demonstrating additional needs throughout the school year.</p> <p>Social, Emotional and Mental Health Needs for Employees</p> <ul style="list-style-type: none"> • Riverside Elementary School District provides an Employee Assistance Plan (EAP) at no cost for Riverside employees. This service provides a confidential assessment, 6 counseling sessions and referral services to employees for behavioral health issues and additional support if needed. • An electronic Health and Wellness newsletters is provided monthly to our employees by each school's Wellness Coordinator. <p>Teacher Professional Development</p> <ul style="list-style-type: none"> • Will continue to take place on Wednesdays for staff. |
|--|--|--|---|

RES D Path to Recovery Plan

Level of Community Spread
(as determined by state and local
health officials)

Nurse Protocols and Procedures



Substantial Spread Protocol (School Closure)

Communication with Parents and Staff

- Contact parents of students with prescription medication and medical supply and schedule an appointment for pick-up.
- Inform parents, students and staff about COVID-19 symptoms, preventative measures, good hygiene and school/district specific protocols.
- Encourage COVID-19 testing.

CDC Guidance

- [How to Protect Yourself and Others](#)
- [COVID-19 Symptoms](#)
- [COVID-19 and Children](#)
- [Communication Tools](#)

Arizona Department of Public Health

- [website | Find COVID-19 testing sites](#)
- [CDC COVID-19 Self-Checker](#)

Arizona COVID-19 Hotline

- Call: 2-1-1 option 6 Crisis Contacts

High/Moderate Spread Protocol

Temperature Checks

- All students must have temperature checked at the start of the day by the classroom teacher. All staff members will have their temperature checked by grade-level lead teacher, supervisors or school nurse. Temperature checks will be documented.
- Anyone entering the campus must review a [COVID-19 self checker](#) questions. If any answers are yes, the staff member must go home.
- Temperatures of 100.4 degrees and above will be sent home and will not be allowed to return on campus until fever free for 72 hours (3 consecutive days) without any fever reducers.

Nurse Office Visits

- Teachers will call the nurse's office before sending any students to health office.
- Health office will only have 3 students at a time 6 feet apart.

Minimal/Low Spread Protocol

Temperature Checks

- All students must have temperature checked at the start of the day by the classroom teacher. All staff members will have their temperature checked by grade-level lead teacher, supervisors or school nurse. Temperature checks will be documented.
- Anyone entering the campus must review a [COVID-19 self checker](#) questions. If any answers are yes, the staff member must go home.
- Temperatures of 100.4 degrees and above will be sent home and will not be allowed to return on campus until fever free for 72 hours (3 consecutive days) without any fever reducers.

Nurse Office Visits

- Teachers will call the nurse's office before sending any students to health office.
- Health office will only have 3 students at a time 6 feet apart.

| | | | |
|--|--|---|--|
| | <ul style="list-style-type: none"> • <u>Support for people in distress, prevention and crisis resources</u> (Website) | <ul style="list-style-type: none"> • Students will wash their hands as soon as they arrive in and leave the health office. <p>Student or Staff with Symptoms of COVID-19</p> <ul style="list-style-type: none"> • Any student or staff presenting symptoms of COVID-19 will be placed in a designated isolation room, where they will be monitored until picked-up. <p>Close Contact Exposure to COVID-19 on Campus</p> <ul style="list-style-type: none"> • Parents and staff are required to inform the school nurse if the student/staff member have tested positive for COVID-19. • It will be required that all students that come in close contact with a confirmed COVID-19 individual will need to quarantine for 7 days and get tested on the 6th day. If the test results are "negative", they may return on the 8th day as long as they are symptom free or if they are a full immunized student they are not required to quarantine as long as they have no symptoms. • If a staff member is in close contact with a confirmed Covid-19 individual, the staff member does not need to quarantine if they are symptom free. | <ul style="list-style-type: none"> • Students will wash their hands as soon as they arrive in and leave the health office. <p>Student or Staff with Symptoms of COVID-19</p> <ul style="list-style-type: none"> • Any student or staff presenting symptoms of COVID-19 will be placed in a designated isolation room, where they will be monitored until picked-up. <p>Possible COVID-19 Exposure on Campus</p> <ul style="list-style-type: none"> • Parents and staff are required to inform the school nurse if the student/staff member have tested positive for COVID-19. • It will be recommended that all students that come in close contact with a confirmed COVID-19 individual will need to quarantine for 7 days and get tested on the 6th day. If the test results are "negative", they may return on the 8th day as long as they are symptom free or if they are a full immunized student they are not required to quarantine as long as they have no symptoms. • If a staff member is in close contact with a confirmed Covid-19 individual, the staff member does not need to quarantine if they are symptom free. |
|--|--|---|--|

| | | | |
|--|--|---|---|
| | | <ul style="list-style-type: none"> • Work packets will be given to students who are quarantined. • If student or staff member tests positive for COVID-19 they must quarantine for 10 days and may return on day 11 if symptom free. <p>Reporting to Public Health and Parents</p> <ul style="list-style-type: none"> • AZ Health Department will be notified and the district will follow the recommendations received from the Arizona Health Department. • Parents and staff members will be immediately notified if they came in close contact with someone who tested positive for COVID-19. • Positive cases of COVID-19 are tracked and made public on our district website. <p>Health Office Cleaning Procedures</p> <ul style="list-style-type: none"> • Nurse's office will continue to disinfect and sanitize the health office after every use. • Hand washing will be highly encouraged and frequently reminded. <p>Rapid Testing</p> <ul style="list-style-type: none"> • RESD nurses have been trained to administer Rapid testing to staff and students who have parental permission for | <ul style="list-style-type: none"> • Work packets will be given to students who are quarantined. • If student or staff member tests positive for COVID-19 they must quarantine for 10 days and may return on day 11 if symptom free. <p>Reporting to Public Health and Parents</p> <ul style="list-style-type: none"> • AZ Health Department will be notified and the district will follow the recommendations received from the Arizona Health Department. • Parents and staff members will be immediately notified if they came in close contact with someone who tested positive for COVID-19. • Positive cases of COVID-19 are tracked and made public on our district website. <p>Health Office Cleaning Procedures</p> <ul style="list-style-type: none"> • Nurse's office will continue to disinfect and sanitize the health office after every use. • Hand washing will be highly encouraged and frequently reminded. <p>Rapid Testing</p> <ul style="list-style-type: none"> • RESD nurses have been trained to administer Rapid testing to staff and students who have parental permission for |
|--|--|---|---|

| | | | |
|--|--|---|---|
| | | <p>diagnostic/screening purposes as needed at each school site.</p> <p>Covid-19 Vaccination Events</p> <ul style="list-style-type: none"> Embry Women's Health Mobile Unit has been stationed within RESD school boundary at the Maricopa Institute of Technology, during school hours, Monday - Friday for Covid-19 screening and vaccinations. Scheduled RESD vaccination events are communicated to the Riverside community on our school/district websites, flyers sent home via students and through our Robo calling system. The Riverside Elementary School District in partnership with our feeder high school, Phoenix Union, has advertised to our school community vaccination events for students 5 to adult. | <p>diagnostic/screening purposes as needed at each school site.</p> <p>Covid-19 Vaccination Events</p> <ul style="list-style-type: none"> Embry Women's Health Mobile Unit has been stationed within RESD school boundary at the Maricopa Institute of Technology, during school hours, Monday - Friday for Covid-19 screening and vaccinations. Scheduled RESD vaccination events are communicated to the Riverside community on our school/district websites, flyers sent home via students and through our Robo calling system. The Riverside Elementary School District in partnership with our feeder high school, Phoenix Union, has advertised to our school community vaccination events for students 5 to adult. |
|--|--|---|---|

RESD Path to Recovery Plan

Level of Community Spread
(as determined by state and local
health officials)

Kings Ridge's Athletics Program



Substantial Spread Protocol (School Closure)

Extracurricular Activities

- No sports or after school activities.

High/Moderate Spread Protocol

Extracurricular Activities


- Extracurricular activities will be cancelled unless the activity can be conducted in compliance with recommended protocols.
- Athletics will run as allowed by the association per CDC guidelines.
- No spectators at practices.
- Spectators may attend games if appropriately masked and sit a minimum of 3 feet apart from other families.
- Parents provide transportation for students after practices.
- Students encouraged to hand wash more frequently.
- Students will be required to bring their own water bottles.
- Parents will be asked to sign a waiver if their student is going to participate in extracurricular activities.

Minimal/Low Spread Protocol

Extracurricular Activities

- Athletics will run as normal per CDC and league guidelines.
- Spectators will be allowed at games and practices.
- Parents will provide transportation to all sporting events as usual.
- Students will be encouraged to hand wash more frequently.
- Students will be required to bring their own water bottles.
- Parents will be asked to sign a waiver if their student is going to participate in extracurricular activities.



| July 2021 | | | | | August 2021 | | | | | September 2021 | | | | | October 2021 | | | | | | | | | | | | | | | | | | | |
|-------------------------------------|--|-----|-----|-----|---|------------------------------------|-----|-----|-----|---|--|-----|-----|-----------------|---|-----------------------------|-----|-----|-----|-------------------------------------|--|--|--|--|--|--|--|--|--|-------------------------------------|--|--|--|--|
| MON | TUE | WED | THU | FRI | MON | TUE | WED | THU | FRI | MON | TUE | WED | THU | FRI | MON | TUE | WED | THU | FRI | | | | | | | | | | | | | | | |
| | | | 1 | 2 | 2 | 3 | 4 | 5 | 6 | | | 1 | 2 | 3 | | | | | 1 | | | | | | | | | | | | | | | |
| 5 | 6 | 7 | 8 | 9 | 9 | 10 | 11 | 12 | 13 | 6 | 7 | 8 | 9 | 10 | 4 | 5 | 6 | 7 | 8 | | | | | | | | | | | | | | | |
| 12 | 13 | 14 | 15 | 16 | 16 | 17 | 18 | 19 | 20 | 13 | 14 | 15 | 16 | 17 | 11 | 12 | 13 | 14 | 15 | | | | | | | | | | | | | | | |
| 19 | 20 | 21 | 22 | 23 | 23 | 24 | 25 | 26 | 27 | 20 | 21 | 22 | 23 | 24 | 18 | 19 | 20 | 21 | 22 | | | | | | | | | | | | | | | |
| 26 | 27 | 28 | 29 | 30 | 30 | 31 | | | | 27 | 28 | 29 | 30 | | 25 | 26 | 27 | 28 | 29 | | | | | | | | | | | | | | | |
| 5 | Fourth of July Observed | | | | 2-6 | District-Wide Benchmark Testing | | | | 6 | Labor Day - No School | | | | 4-8 | Fall Break - No School | | | | | | | | | | | | | | | | | | |
| 14-16 | New Teacher Orientation | | | | 6 | ADM 10th Day Student Count | | | | 7 | Mid-Term Reports Issued | | | | 22 | All Day STEM PD - No School | | | | | | | | | | | | | | | | | | |
| 19-23 | PD - All Teachers Return | | | | 27 | All Day STEM PD - No School | | | | 21 | ADM 40th Day Student Count | | | | 28 | End of 1st Trimester | | | | | | | | | | | | | | | | | | |
| 22 | Meet the Teacher Night | | | | | Early Dismissal | | | | 24 | All Day STEM PD - No School | | | | | Early Dismissal | | | | | | | | | | | | | | | | | | |
| 26 | First Day of School | | | | | | | | | | Early Dismissal | | | | | | | | | | | | | | | | | | | | | | | |
| Days of Attendance = 5 | | | | | Wednesdays= Early Dismissal for Students | | | | | Days of Attendance = 5 + 21 = 26 | | | | | Wednesdays= Early Dismissal for Students | | | | | Days of Attendance = 26 + 20 = 46 | | | | | Wednesdays= Early Dismissal for Students | | | | | Days of Attendance = 46 + 15 = 61 | | | | |
| | | | | | | | | | | | | | | | | | | | | | | | | | | | | | | | | | | |
| November 2021 | | | | | December 2021 | | | | | January 2022 | | | | | February 2022 | | | | | | | | | | | | | | | | | | | |
| MON | TUE | WED | THU | FRI | MON | TUE | WED | THU | FRI | MON | TUE | WED | THU | FRI | MON | TUE | WED | THU | FRI | | | | | | | | | | | | | | | |
| 1 | 2 | 3 | 4 | 5 | | | 1 | 2 | 3 | 3 | 4 | 5 | 6 | 7 | | 1 | 2 | 3 | 4 | | | | | | | | | | | | | | | |
| 8 | 9 | 10 | 11 | 12 | 6 | 7 | 8 | 9 | 10 | 10 | 11 | 12 | 13 | 14 | 7 | 8 | 9 | 10 | 11 | | | | | | | | | | | | | | | |
| 15 | 16 | 17 | 18 | 19 | 13 | 14 | 15 | 16 | 17 | 17 | 18 | 19 | 20 | 21 | 14 | 15 | 16 | 17 | 18 | | | | | | | | | | | | | | | |
| 22 | 23 | 24 | 25 | 26 | 20 | 21 | 22 | 23 | 24 | 24 | 25 | 26 | 27 | 28 | 21 | 22 | 23 | 24 | 25 | | | | | | | | | | | | | | | |
| 29 | 30 | | | | 27 | 28 | 29 | 30 | 31 | 31 | | | | | 28 | | | | | | | | | | | | | | | | | | | |
| 1-5 | District-Wide Benchmark Testing | | | | 17 | Mid-Term Reports Issued | | | | 14 | ADM - 100th Day | | | | 15 | End of 2nd Trimester | | | | | | | | | | | | | | | | | | |
| 10-12 | Early Dismissal/Conferences/Rept. Cards Issued | | | | 20-31 | Winter Break - No School | | | | 17 | MLK Day - No School | | | | 21 | President's Day - No School | | | | | | | | | | | | | | | | | | |
| 11 | Veterans Day - No School | | | | | Early Dismissal | | | | 21 | All Day STEM PD - No School | | | | 18 | All Day STEM PD - No School | | | | | | | | | | | | | | | | | | |
| 22-26 | Thanksgiving Recess-No School | | | | | | | | | 24-28 | District Benchmark Testing | | | Early Dismissal | | | | | | | | | | | | | | | | | | | | |
| | Early Dismissal | | | | | | | | | | Early Dismissal | | | | | | | | | | | | | | | | | | | | | | | |
| Days of Attendance = 61 + 16 = 77 | | | | | Wednesdays= Early Dismissal for Students | | | | | Days of Attendance = 77 + 13 = 90 | | | | | Wednesdays= Early Dismissal for Students | | | | | Days of Attendance = 90 + 19 = 109 | | | | | Wednesdays= Early Dismissal for Students | | | | | Days of Attendance = 109 + 18 = 127 | | | | |
| | | | | | | | | | | | | | | | | | | | | | | | | | | | | | | | | | | |
| March 2022 | | | | | April 2022 | | | | | May 2022 | | | | | June 2022 | | | | | | | | | | | | | | | | | | | |
| MON | TUE | WED | THU | FRI | MON | TUE | WED | THU | FRI | MON | TUE | WED | THU | FRI | MON | TUE | WED | THU | FRI | | | | | | | | | | | | | | | |
| | 1 | 2 | 3 | 4 | | | | | 1 | 2 | 3 | 4 | 5 | 6 | | | 1 | 2 | 3 | | | | | | | | | | | | | | | |
| 7 | 8 | 9 | 10 | 11 | 4 | 5 | 6 | 7 | 8 | 9 | 10 | 11 | 12 | 13 | 6 | 7 | 8 | 9 | 10 | | | | | | | | | | | | | | | |
| 14 | 15 | 16 | 17 | 18 | 11 | 12 | 13 | 14 | 15 | 16 | 17 | 18 | 19 | 20 | 13 | 14 | 15 | 16 | 17 | | | | | | | | | | | | | | | |
| 21 | 22 | 23 | 24 | 25 | 18 | 19 | 20 | 21 | 22 | 23 | 24 | 25 | 26 | 27 | 20 | 21 | 22 | 23 | 24 | | | | | | | | | | | | | | | |
| 28 | 29 | 30 | 31 | | 25 | 26 | 27 | 28 | 29 | 30 | 31 | | | | 27 | 28 | 29 | 30 | | | | | | | | | | | | | | | | |
| 3-4 | Early Dismissal/Conferences/Rept. Cards Issued | | | | 1 | Cesar Chavez - No School | | | | 4-5 | Kinder Promotion | | | | <div>SUMMER BREAK Begins May 23, 2022</div>  | | | | | | | | | | | | | | | | | | | |
| 7-11 | Spring Break - No School | | | | 4-15 | State Testing (No Early Dismissal) | | | | 6 | 8th Grade Promotion | | | | | | | | | | | | | | | | | | | | | | | |
| | Early Dismissal | | | | 8 | Mid-Term Reports Issued | | | | 9-20 | Spring Forward | | | | | | | | | | | | | | | | | | | | | | | |
| | | | | | 25-29 | District Benchmark Testing | | | | 19 | Meet The Teacher Night (2022-2023) | | | | | | | | | | | | | | | | | | | | | | | |
| | | | | | | Early Dismissal | | | | 20 | Last Day of School/Report Cards Issued | | | | | | | | | | | | | | | | | | | | | | | |
| Days of Attendance = 127 + 18 = 145 | | | | | Wednesdays= Early Dismissal for Students | | | | | Days of Attendance = 145 + 20 = 165 | | | | | Wednesdays= Early Dismissal for Students | | | | | Days of Attendance = 165 + 15 = 180 | | | | | | | | | | | | | | |
| | | | | | | | | | | | | | | | | | | | | | | | | | | | | | | | | | | |
| Kindergarten | | | | | 880.4 Total Instructional Hours for the School Year | | | | | K Instructional Hours = 5.30 Full Days/ 3.00 Half Day | | | | | | | | | | | | | | | | | | | | | | | | |
| First Grade | | | | | 880.4 Total Instructional Hours for the School Year | | | | | 1st Instructional Hours = 5.30 Full Days/ 3.00 Half Day | | | | | | | | | | | | | | | | | | | | | | | | |
| Second Grade | | | | | 880.4 Total Instructional Hours for the School Year | | | | | 2nd Instructional Hours = 5.30 Full Days/ 3.00 Half Day | | | | | | | | | | | | | | | | | | | | | | | | |
| Third and Fourth Grade | | | | | 1,038 Total Instructional Hours for the School Year | | | | | 3rd/4th Instructional Hours = 6.30 Full Days/ 3.30 Half Day | | | | | | | | | | | | | | | | | | | | | | | | |
| Fifth through Eighth Grade | | | | | 1,065 Total Instructional Hours for the School Year | | | | | 5th-8th Instructional Hours = 6.45 Full Days/ 3.45 Half Day | | | | | | | | | | | | | | | | | | | | | | | | |
| 180 Total Instructional Days | | | | | 190 = Total Teacher Days / 193 = Total New Teacher Days | | | | | | | | | | | | | | | | | | | | | | | | | | | | | |
| Governing Board Approved 11/19/2020 | | | | | | | | | | | | | | | | | | | | | | | | | | | | | | | | | | |

RESD Path to Recovery Plan - Athletics Program Waiver

Riverside Elementary School District No. 2 Waiver, Release, and Assumption of Risk Form

On behalf of myself, my household members, and my minor child, _____, I hereby give permission for my child to attend extracurricular programming at Kings Ridge. My child and I are familiar with, and knowingly and voluntarily accept, any and all risks associated with attending or participating in extracurricular programming at Kings Ridge. I acknowledge that my child's participation in these program(s) is wholly voluntary and is not part of any regular school curriculum or program.

I specifically assume all risks and hazards associated with my child's participation in extracurricular programming at Kings Ridge including, but not limited to, the risks associated with the novel COVID-19 virus. I understand that my child will be associating with staff and other children and may contract COVID-19, and other viruses and diseases, through my child's participation in extracurricular programming at Kings Ridge. Although the children and staff may have their temperatures taken upon entering these programs, that precaution is not nearly adequate to prevent the spread of COVID-19 given, among other things, the relatively long incubation period, and the fact that many infected persons are asymptomatic. I understand and voluntarily assume the risk that my child may acquire COVID-19, and that COVID-19 may subsequently be transmitted from my child to me, my family, and members of my household.

While instruction and reasonable supervision will be provided, extracurricular programming at Kings Ridge staff cannot ensure my child's safety. Accidents and injuries happen, and it is impossible to eliminate the risk that my child will suffer an injury or illness.

I certify that my child is in good health, has no fever, and has no current issues that make it unsafe for my child to participate in extracurricular programming at Kings Ridge, which may not have a medical professional on staff. I will notify the school's nurse directly and not send my child to extracurricular programming if my child develops a fever or illness or tests positive for COVID-19. I understand that a doctor's note is required for my child to be admitted back into extracurricular programming at Kings Ridge. I acknowledge that my child and I are responsible for ensuring that he or she takes any necessary medication, and for avoiding any allergies. In the event of a medical emergency, 911 will be called and I will be responsible for any and all costs of medical treatment.

To the fullest extent permitted by law, I hereby agree to waive, release, and discharge any and all claims, causes of action, damages, and rights of any kind against the school, the school district, its insurers, the district's governing board, and all of their respective employees, agents, representatives, and volunteers (the "Released Parties") arising from or relating in any way to any damage, injury, trauma, illness, loss, unwanted contact, harassment, disability, dismemberment, or death that may occur to my child, me, or my household members—whatever the cause—due to my child's participation in extracurricular programming at Kings Ridge. This includes, without limitation, any claim arising from the negligence of the Released Parties.

I further agree not to sue the Released Parties, and to defend and indemnify the Released Parties for all claims, damages, losses, or expenses, including attorneys' fees, if a suit is filed concerning an injury, illness, or death to me, my child, or my household members resulting from participation in extracurricular programming at Kings Ridge.

Student's Name: _____ Grade: ____ Homeroom Teacher: _____

Parent/Guardian Name (Printed): _____

Parent/Guardian Signature: _____ Date: _____

* EXTRACURRICULAR PROGRAMMING MAY INCLUDE BUT NOT LIMITED TO ATHLETICS, CHILD CARE, BAND, CHEER, TRANSPORTATION, OR ANY OTHER VOLUNTARY PROGRAMS & SERVICES PROVIDED BY THE DISTRICT.